



Original Instructions.....12 - 21



## **RENOVATION SAW – “START”**

Réf. 93499

## Important Safety Instructions

Important instructions and warning notices are allegorized on the machine by means of symbols:



**Before you start working, read the operating instructions of the machine.**



**Work concentrated and carefully. Keep your work-place clean and avoid dangerous situations.**



**In order to protect the user, take precautions.**

During work you should wear ear protectors, goggles, dust mask, protective gloves and sturdy work clothes!



**Use ear protection**



**Wear safety goggles**



**Wear a dust mask**



**Wear protective gloves**

## Specifications

### Renovation Saw - Start

Rated voltage:	230 V ~
Power input:	1300 W
Rated Current:	6,0 A
Order Number:	093499

Frequency:	40-60 Hz
Rated speed:	1400 - 3000 rpm
Cutting height:	1,5 - 30 mm
Cutting depth:	0 - 40 mm
Saw blade diameter:	150 mm
Spindle connection:	M14 Male thread (for saw blade fitting)
Protection class:	II
Degree of protection:	IP 20
Net weight:	ca. 3,9 kg
Interference suppression:	EN 55014 und EN 61000

### Available accessories:

	Ordernumber:
Carbide metal blade	093559

## Content of Delivery

Circular saw with carbide metal blade, Allen key and user manual are included in box.

## Application for Indented Purpose

The **Renovation Saw - Start** is designed for professional use. The supplied blade cuts wood and wood materials such as MDF, laminate, parquet etc. with a minimum of effort. Door leaves and frames can be modified for new floors quickly, cleanly and precisely. It can also be used to adjust shadow gaps as well as expansion joints on laminate and parquet floors.

## Safety Instructions



**Safe work with the machine is only possible if you read this operating instruction completely and follow the instructions contained strictly.**

**Additionally, the general safety instructions of the leaflet supplied with the tool must be observed. Prior to the first use, the user should absolve a practical training**



**If the mains cable gets damaged or cut during the use, do not touch it, but instantly pull the plug out of the socket. Never use the tool with damaged mains cable.**



**The tool must neither be wet nor used in humid environment.**

- Do not use the tool in an environment with danger of explosion.
- Materials containing asbestos must not be processed.
- Modifications of the tool are prohibited.
- Always check the tool, cable and plug before use and plug before use. Have damages only repaired by specialists.
- Operate the device in the open air via a residual current device with max. 30 mA.
- Switch off the machine if it is left standing for any reason. This prevents the machine from suddenly starting up when left unattended.
- Switch the machine off if it stops for whatever reason. You avoid that it starts suddenly and not under supervision.
- Don't use the machine if a part of the housing is damaged or in case of damages on the switch, the cable or plug.
- Only use properly sharpened saw blades suited to the application – only use original saw blades!
- Saw blades must be stored and handled with care according to manufacturer's instructions.
- Before use, check the saw blade – do not use damaged products.
- Ensure that the saw blade is fitted correctly and secured before use (direction of rotation!) and let the tool idle for ca. 30 seconds in a safe place. Switch off immediately if discernible vibrations occur or if other defects are found.
- Only remove the floor guard to change the saw blade. Never operate the machine without the floor guard – risk of injury to hands or other body parts.
- After finishing work set the depth stop to zero to prevent the blade guard from accidentally being pushed back – risk of injury!

- Before work, always check that the spring mechanism of the safety guard is working properly.
- Ensure that there are no risks presented by sparks produced during use, which may e.g. strike people or ignite flammable substances.
- Always lead the mains and extension cable as well as the extraction hose to the back away from the machine.
- Power tools have to be inspected by a specialist in regular intervals.
- Never carry the machine at its cable.
- Do not touch rotating parts.
- Persons under 16 years of age are not allowed to use the tool.
- During use, the operator and other persons standing nearby have to wear suitable ear protectors, a dust mask, protection goggles as well as protective gloves.
- Make sure that persons in the work space are not endangered by particles flying around.
- Keep the handles dry, clean and free of oil and grease.
- **Always hold the tool with both hands.**
- **Caution! The tool continues to run after the machine has been switched off.**

**For further safety instructions, please refer to the enclosure!**

### Electrical Connection

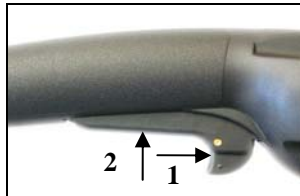
First, check the correspondence between voltage and frequency against the data mentioned on the identification plate.

Voltage differences of + 6 % to – 10 % are allowed.

The machine is equipped with a soft start which prevents that swift automatic circuit breakers are unintentionally triggered.

### Switching on and off

**The Renovation Saw – Start is equipped with a lock-off button against unintentional switch-on.**



Switching-on: push the on/off switch forward (1) and then down (2)

Switching-off: release the on/off switch



The **Renovation Saw – Start** is equipped with an adjusting wheel in order to allow a continuously variable control of the speed from 1400 and 3000 rpm.

The adjusting wheel is on the top side of the handle opposite of the on/off switch

#### Rated speeds

Setting	Speed (rpm)
A	1400
B	1600
C	1900
D	2200
E	2500
F	2800
G	3000

A permanent use with reduced speed can cause an overload because the motor then gets less cooling air and therefore the machine will be overheated much faster.

#### Retooling



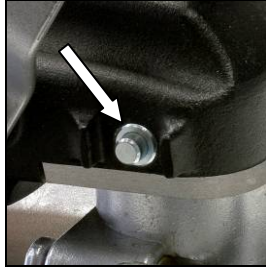
#### **Attention!**

**Before any work on the tool, disconnect the plug from the mains! Wear protective gloves!**



Loosen the 6 Philips head screws and remove the floor protector.

To dismantle, loosen the 4 Allen screws with the Allen key supplied and remove the saw blade from the spindle.



Fit the saw on the spindle by reversing the sequence. Make sure that the holes in the saw blade point upwards! To make it easier to change the blade, use the spindle lock to clamp it.

**In order to check whether the spindle stop is released before you switch on the tool, turn the spindle slightly.**

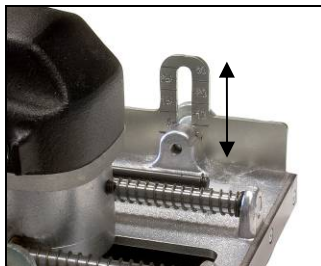
Then fit the floor guard.

**Use only original accessory!**

**Let the machine run for a short period of time and in a safe position. If the machine does not run easily, stop working immediately.**

Switch the device on and insert carefully into the material to be cut. When cutting in the material, always guide the saw to the right. Hold the device tightly in both hands.

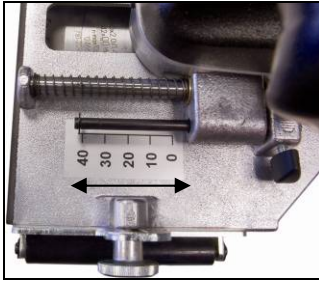
#### Cutting height adjustment



The cutting height can be adjusted from 1.5 to 30 mm.

Loosen the two knurled screws on the right and left of the guide rollers and set the required cutting height with the help of the scale. Then tighten both screws again. Before starting work, check the cutting height on a test piece.

### Cutting depth adjustment



The cutting depth can be adjusted from 0 to 40 mm.

Loosen the toggle screw and with the help of the depth stop, set the required cutting depth to match the thickness of the work piece to be cut.

Then tighten the screws again.

After completing the work, set the depth stop to zero to prevent the blade guard from being accidentally pushed back.

Risk of injury!

### Overload Protection

In order to protect the user, the motor and the tool, the **Renovation Saw – Start** is equipped with an electronic and thermal overload protection.

**Electronic:** In case of overload caused by a grinding pressure which is too high, the electronics react by decreasing the speed of the machine. You can continue working when the grinding pressure has been reduced.

**Thermal:** By means of a thermal sensor, in case of continuous overload, the motor is protected against destruction. In fact, the machine switches off automatically and only can be switched on again after a certain cooling period (about 2 minutes). Press the on/off switch. The cooling period depends on the heating of motor winding and ambient temperature.

## Care and Maintenance



**Before the beginning of maintenance or repair works you have to disconnect the plug from the mains.**

Repairs may be executed only by appropriately qualified and experienced personnel. After every repair the machine has to be inspected by an electric specialist.

Due to its design, the machine needs a minimum of care and maintenance. However, the following points always have to be observed:

- Always keep the power tool and the ventilation slots clean.
- During work, please pay attention that no particles get inside the machine.
- In case of failure, a repair has to be carried out by an authorised service workshop.

## Environmental Protection



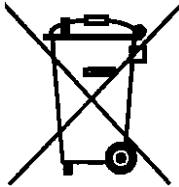
### **Raw material recycling instead of waste disposal**

To avoid damages on transportation, the power tool has to be delivered in a sturdy packing. Packaging as well as unit and accessories are made of recyclable materials and can be disposed accordingly.

The tool's plastic components are marked according to their material, which makes it possible to remove environmental friendly and differentiated because of available collection facilities.

### **Only for EU countries**

Do not dispose of electric tools together with household waste material!



In observance of the European Directive 2002/96/EC on waste electrical and electronic equipment and its implementation in accordance with national law, electric tools that have reached the end of their life must be collected separately and returned to an environmentally compatible recycling facility.

## Noise Emission / Vibration

The indication of noise emission is measured according to DIN 45 635, part 21. The level of acoustic pressure on the work place could exceed 85 dB (A); in this case protection measures must be taken.



### Gehörschutz tragen!

Hand/Arm vibration:

Measurements taken in accordance with EN 60 745

Vibration emission value	$a_h$ 3,2 m/s <sup>2</sup>
Uncertainty	K 0,3 m/s <sup>2</sup>

The vibration emission level given in this information sheet has been measured in accordance with a standardized test given in EN 60745 and may be used to compare one tool with another. It may be used for a preliminary assessment of exposure.

The declared vibration emission level represents the main applications of the tool. However if the tool is used for different applications, with different accessories or poorly maintained, the vibration emission may differ. This may significantly increase the exposure level over the total working period.

An estimation of the level of exposure to vibration should also take into account the times when the tool is switched off or when it is running but not actually doing the job. This may significantly reduce the exposure level over the total working period.

Identify additional safety measures to protect the operator from the effects of vibration such as: maintain the tool and the accessories, keep the hands warm, organisation of work patterns.

## Dust Protection

Dust from material such as paint containing lead, some wood species, minerals and metal may be harmful. Contact with or inhalation of the dust may cause allergic reactions and/or respiratory diseases to the operator or bystanders.

Certain kinds of dust are classified as carcinogenic such as oak and beech dust especially in conjunction with additives for wood conditioning (chromate, wood preservative). Material containing asbestos must only be treated by specialists.

- Where the use of a dust extraction device is possible it shall be used.
- To achieve a high level of dust collection, use industrial vacuum cleaner type "VACROM" for wood and/or minerals together with this tool.
- The work place must be well ventilated.
- The use of a dust mask of filter class P2 is recommended.

### **Warranty**

According to our general terms of delivery for business dealings, suppliers have to provide to companies a warranty period of 12 months for redhibitory defects (to be documented by invoice or delivery note).

Damages due to natural wear, overstressing or improper handling are excluded from this warranty.

Damages due to material defects or production faults shall be eliminated free of charge by either repair or replacement.

Complaints will be accepted only if the tool is returned in non-dismantled condition to the manufacturer or an authorized Romus service centre.

### **CE Declaration of Conformity**

On sole responsibility we declare that this product is in conformity with the following standards and standard documents:

EN 60 745, EN 55 014, EN 61 000,  
according to the regulations 2006/95/EC, 2004/108/EC, 2006/42/EC